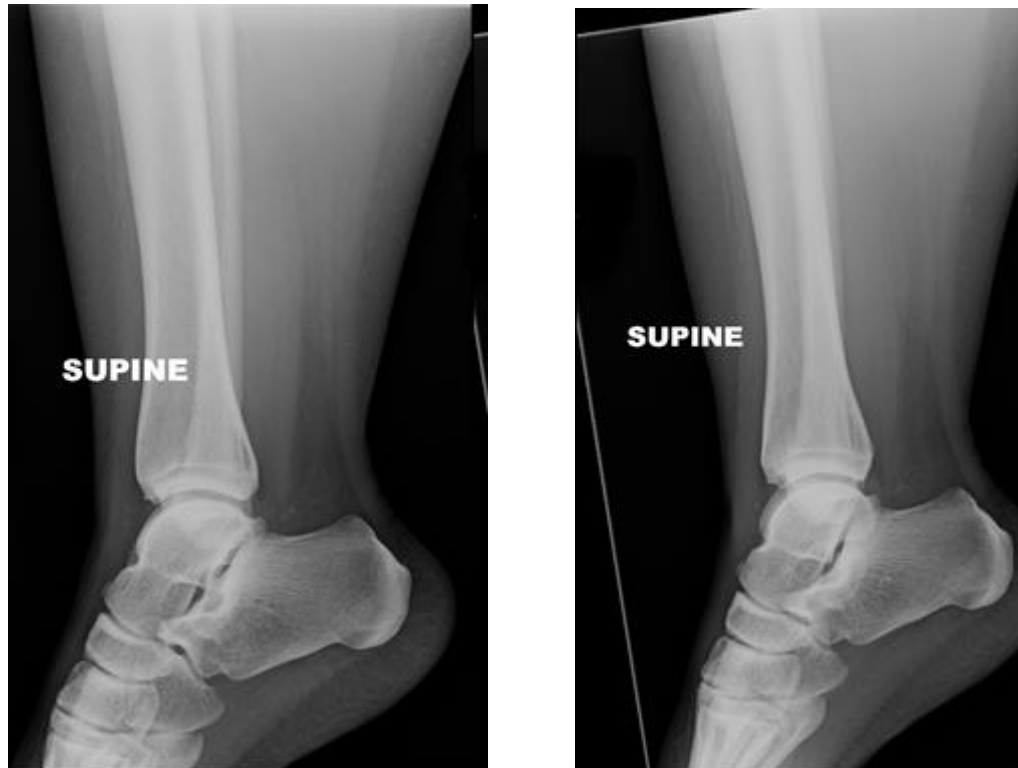


Technologist Review System Ankle Radiography

Category	A	B	Comments
All Exams			
Complete exam	All projections and Patient Information Form (PIF) included	Missing any of the projections or PIF	
Overlying material removed	No overlying material or trivial overlying material which does not obscure anatomy	Overlying material which obscures anatomy	More than minimal overlying clothing or an inappropriately positioned marker may obscure or mimic fracture lines, retained foreign bodies, etc.
Motion artifact	None or trivial (questionable) motion artifact which does not obscure anatomy	Motion artifact which obscures anatomy	Motion artifact obscures fracture lines and joint space margins.
Any view			
Fifth metatarsal base	Seen well enough to exclude fracture	Not seen well enough to exclude fracture	A fractured fifth metatarsal may cause "ankle" pain.
AP or Mortise			
Mortise visualization	At least one view shows no overlap of the talus and tibia along the medial and superior, and the talus and fibula along the lateral mortise.	Overlap on both the AP and mortise view of the mortise bones.	The mortise should be profiled to evaluate joint space narrowing, loose bodies, osteochondral defect of the talar dome, and chondrocalcinosis.
Lateral			
Measure offset of talar dome on lateral	2 mm or less	> 3 mm	The ankle joint should be profiled to evaluate joint space narrowing, loose bodies, osteochondral defect of the talar dome, and chondrocalcinosis.

Ankle All Views



B -> A exam: Overlapping material (“SUPINE” marker) on initial exam, moved off of the tibia on repeat study.

Category	A	B
Overlying material removed	No overlying material or trivial overlying material which does not obscure anatomy	Overlying material which obscures anatomy

Ankle Any View



B: Base of the fifth metatarsal is not seen well enough on any of the three views to exclude fracture

Category	A	B
Fifth metatarsal base	Seen well enough to exclude fracture	Not seen well enough to exclude fracture

AP or Mortise



A. No overlap of the talus and tibia.

B: Overlap on both the AP and mortise view of the mortise bones.

Category	A	B
Mortise visualization	At least one view shows no overlap of the talus and tibia along the medial and superior, and the talus and fibula along the lateral mortise.	Overlap on both the AP and mortise view of the mortise bones.

Lateral



A: Less than 2 mm offset of the talar dome.

B: More than 2 mm offset of the talar dome (rotation)

Category	A	B
Measure offset of talar dome on lateral	2 mm or less	> 3 mm