

Technologist Review System Cervical Spine Radiography

Category	A	B	Comments
All Exams			
Complete exam	All projections	Missing any of the projections	Patient information form should also be included for DCMC exams.
Overlying material removed and marker appropriately positioned	No overlying material or trivial overlying material which does not obscure anatomy; marker appropriately positioned.	Overlying material or inappropriately positioned marker which obscures anatomy.	More than minimal overlying clothing or an inappropriately positioned marker may obscure or mimic fracture lines, retained foreign bodies, etc.
Motion artifact	None or trivial (questionable) motion artifact which does not obscure anatomy	Motion artifact which obscures anatomy	Motion artifact obscures fracture lines, joint space margins, airway margins, etc.
Lateral			
T1 well enough seen to confidently evaluate C7/T1 alignment	Yes	No	Mal-alignment at C7/T1 may indicate significant post-traumatic injury.
Open Mouth			
Bottom half of dens seen	Yes	No	The inferior aspect of the dens is the most likely to be injured.
Lateral masses of C1 seen well enough to evaluate C1-C2 alignment	Yes	No	Mal-alignment of C1 on C2 may indicate a fracture of the C1 ring.
Obliques			
Pedicles and foramina well seen	Yes	No	Pedicles and foramina must be seen to evaluate boney fracture, joint dislocation, and/or foraminal stenosis.

Cervical Spine All Images: Overlying Material



A: Free of overlying material.

B: Overlying material which obscures anatomy (marker)

Category	A	B
----------	---	---

Examination is free of all material (including clothing, hair, medical devices, and markers) which interferes with reading or obscures important anatomy	Yes	No
--	-----	----

Cervical Spine All Images: Motion Artifact



A: No motion artifact



B: Motion artifact obscuring anatomy

Category	A	B
Examination is free of all motion artifact which significantly interferes with reading or obscures important anatomy	Yes	No

Cervical Spine Lateral: T1 visualization



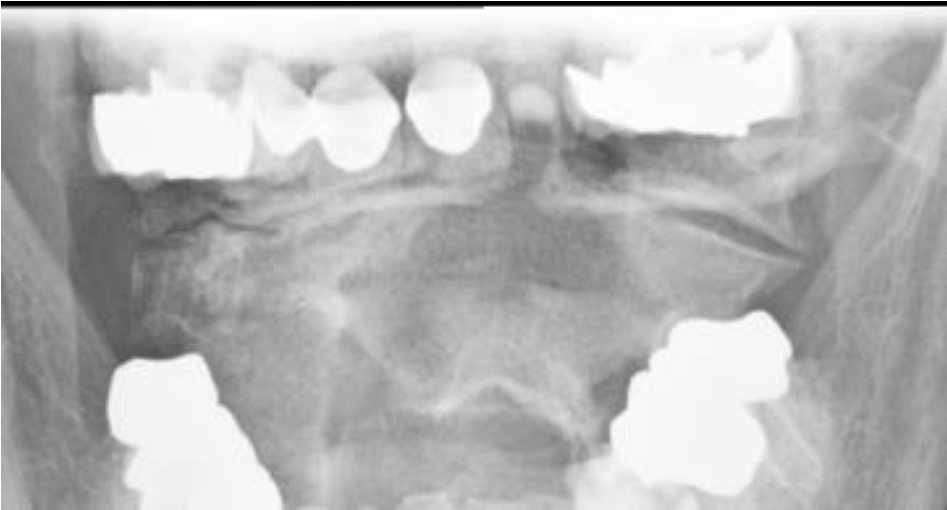
A: T1 seen



B: T1 not seen well enough to evaluate C7/T1 alignment

Lateral (+ supplemental views if included)		
Category	A	B
T1 seen well enough to confidently evaluate C7/T1 alignment	Yes	No

Cervical Spine Open Mouth: Dens



A: Bottom half seen well enough to exclude fracture

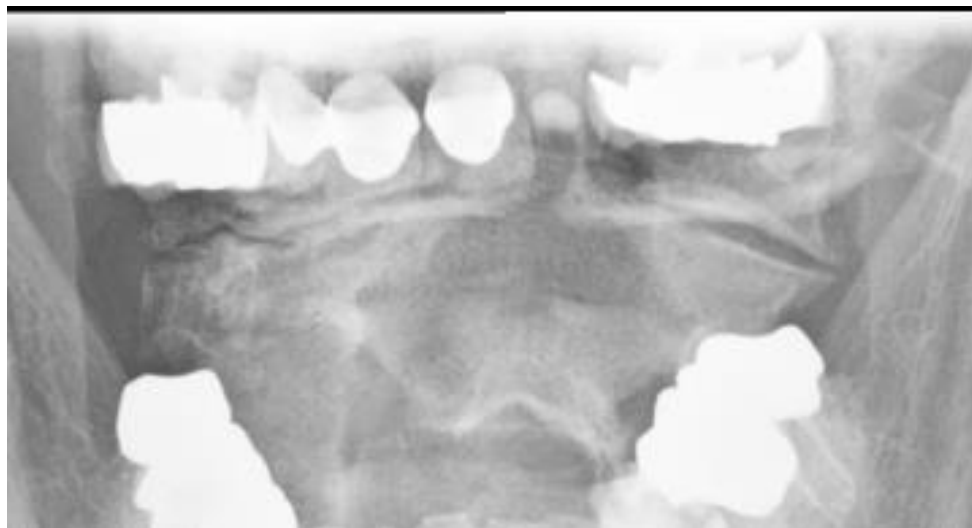
B: Not seen well enough to exclude fracture

Category	A	B
Dens seen well enough to exclude a fracture through the base	Yes	No

Cervical Spine Open Mouth: Lateral Masses of C1



A: Lateral masses seen



B: Lateral masses obscured

Open mouth AP (+ supplemental views if included)		
Category	A	B
Lateral masses of C1 well enough to evaluate C1-C2 alignment	Yes	No

Cervical Spine Obliques: Foramina and Pedicles



A: Pedicles/foramina well seen



B: Pedicles/foramina not well enough seen

Category	A	B
Pedicles seen well enough to exclude fracture/tumor and foramina seen well enough to	Yes	No



TRS Cervical Spine Radiography

grade any stenosis (recognizing that degenerative changes may obscure the foramina)		
---	--	--